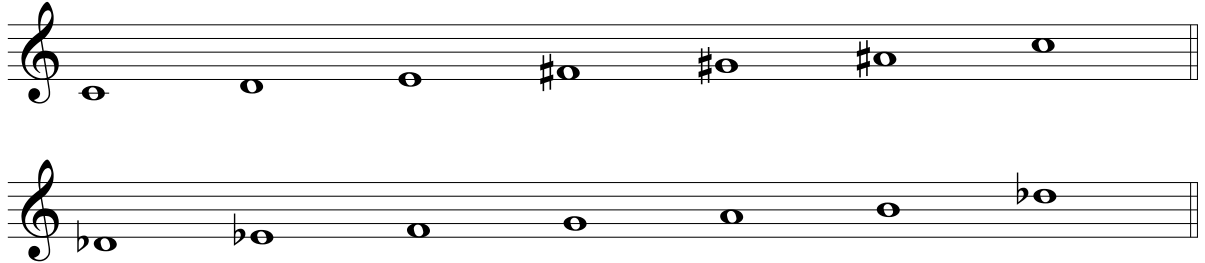


# The ABCs and 123s of Equal Temperament at the Keyboard

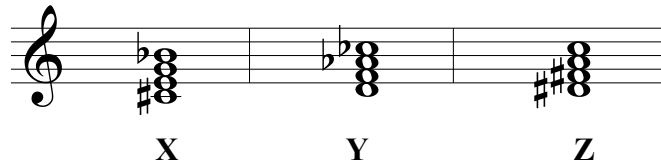
(adapted from Harmonic Experience by W. A. Mathieu)

**A** There is 1 CHROMATIC SCALE that is divided into 12 equal parts or *half steps*.

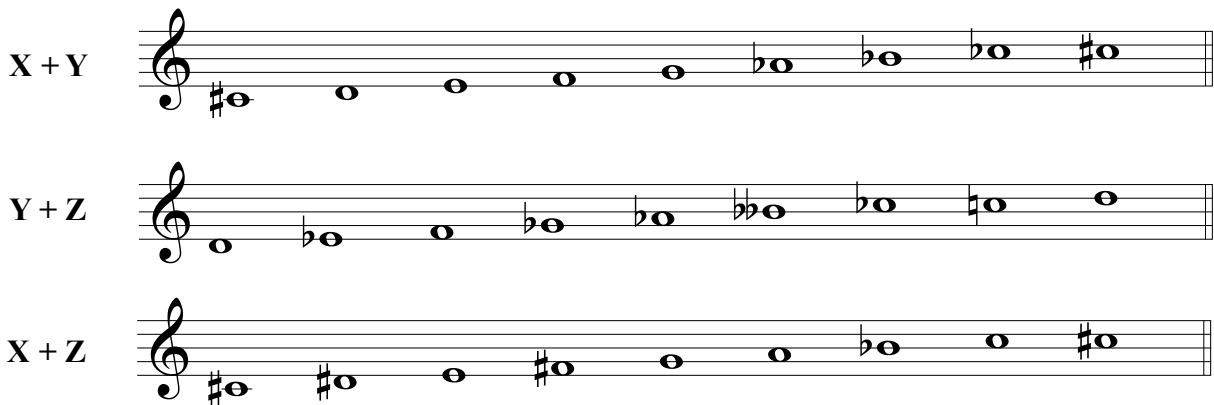
**B** There are 2 WHOLE TONE SCALES made up of all *whole steps*. Any other spelling will be an enharmonic spelling of one of the following two scales (and will use the same piano keys).



**C** There are 3 FULLY DIMINISHED SEVENTH CHORDS made up of stacked *minor thirds*. All other spellings will be enharmonic versions of one of the three following chords, X, Y or Z.



**D** There are also 3 OCTATONIC or DIMINISHED SCALES made up of alternating *whole & half steps*. Combining two of any of the three fully diminished 7th chords from Part C will result in one of the scales below. Any other spelling is an enharmonic version of one of the following three scales.



**E** There are 4 AUGMENTED TRIADS made up of two stacked *major thirds*. Any other spellings will be enharmonic spellings of the four chords below. In addition a) if you move any single tone up a half step, you will resolve to a *minor triad*, and b) if you move any single tone down a half step, you will resolve to a *major triad*. This gives any augmented triad a total of six convincing resolutions.

